


## For Residential and Commercial Applications

Job Name		Engineer / Architect	
Job Location		Wholesaler	
Submittal Date		Contractor	

## WB00/ WB10 7/8" OD Copper Water Heater Connectors – Female Iron Pipe x Female Iron Pipe

**Use:** For use in exposed locations only to connect water heaters and other water connected devices to the water supply

**Design Features:**

- **Galvanic corrosion resistance.** Internal dielectric sleeve effectively isolates dissimilar metals within the waterway to prevent galvanic corrosion
- **Nut provides a full thread engagement** resulting in a secure connection
- 

**Operating Specifications:**

**Temperature:** 40° - 180° F (maximum 82° C)

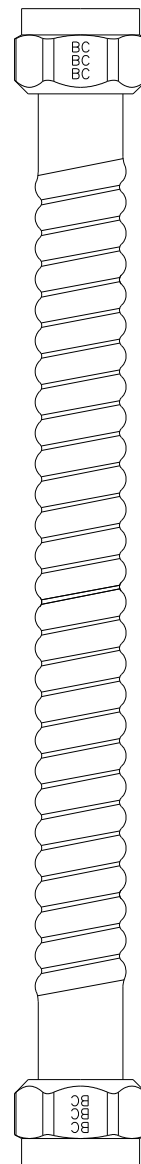
**Pressure:** water pressures up to 125 PSI maximum



CONNECTOR MATERIAL SPECIFICATIONS	
<b>Tubing</b>	Copper
<b>Dielectric Sleeve</b>	Polypropylene
<b>Nut</b>	Brass
<b>End Fitting</b>	Brass
<b>Washer</b>	Rubber

**Part Listing:**

<input type="checkbox"/>	WB00-12N	7/8" OD X 12" connector with 3/4" FIP x 3/4" FIP end fittings
<input type="checkbox"/>	WB00-15N	7/8" OD X 15" connector with 3/4" FIP x 3/4" FIP end fittings
<input type="checkbox"/>	WB00-18N	7/8" OD X 18" connector with 3/4" FIP x 3/4" FIP end fittings
<input type="checkbox"/>	WB00-24N	7/8" OD X 24" connector with 3/4" FIP x 3/4" FIP end fittings
<input type="checkbox"/>	WB00-30N	7/8" OD X 30" connector with 3/4" FIP x 3/4" FIP end fittings
<input type="checkbox"/>	WB00-36N	7/8" OD X 36" connector with 3/4" FIP x 3/4" FIP end fittings
<input type="checkbox"/>	WB10-18N	7/8" OD X 18" connector with 1" FIP x 3/4" FIP end fittings



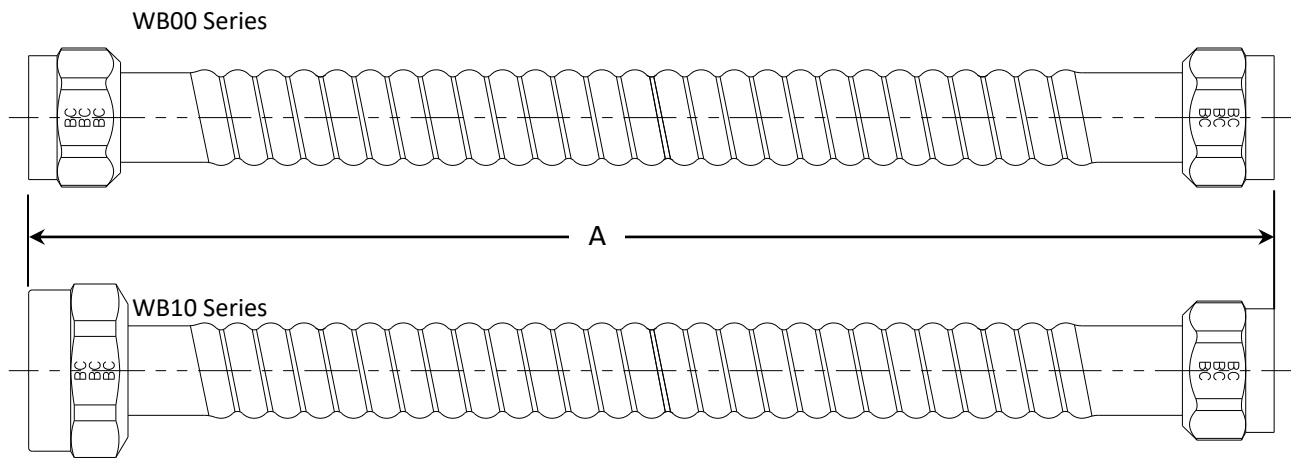
This specification and all information contained herein is the confidential and exclusive property of Brasscraft Manufacturing Company and shall not be disclosed to others without the written consent of Brasscraft Mfg. Co. This specification must be returned to Brasscraft Mfg. Co. if requested.

300.54 WB00/ WB10 Copper Water Heater Connector REV 9.19

**BrassCraft®**

©2019 Brasscraft Manufacturing Company

# WB00/ WB10 7/8" OD Copper Water Heater Connectors – Female Iron Pipe x Female Iron Pipe



PART DIMENSIONS (Inches)							
Connector Length – Nut by Nut ( $\pm .31$ )							
Model	Dim.	12"	15"	18"	24"	30"	36"
WB00	A	12.31	15.31	18.31	24.31	30.31	36.31
WB10	A	-----	-----	18.31	-----	-----	-----

**Listings & Certifications:**

- IAPMO listed to ASME A112.18.6 / CSA B125.6



*This specification and all information contained herein is the confidential and exclusive property of Brasscraft Manufacturing Company and shall not be disclosed to others without the written consent of Brasscraft Mfg. Co. This specification must be returned to Brasscraft Mfg. Co. if requested.*