

For Residential and Commercial Applications

Job Name		Engineer / Architect	
Job Location		Wholesaler	
Submittal Date		Contractor	

WRU-12-12 Water Heater Adapter – Straight Pipe Threads x Male Iron Pipe

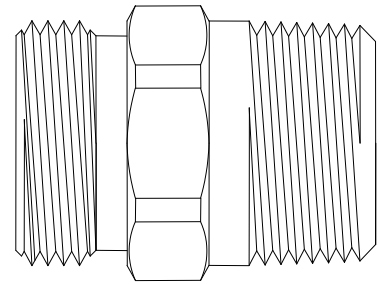
Use: Use with water heater connectors to convert female water heater connector nut to male pipe threads

Operating Specifications:

- Temperature:** 40° to 180° F (NSF61 maximum 82° C)
- Working Pressure:** water pressures to 125 PSI maximum

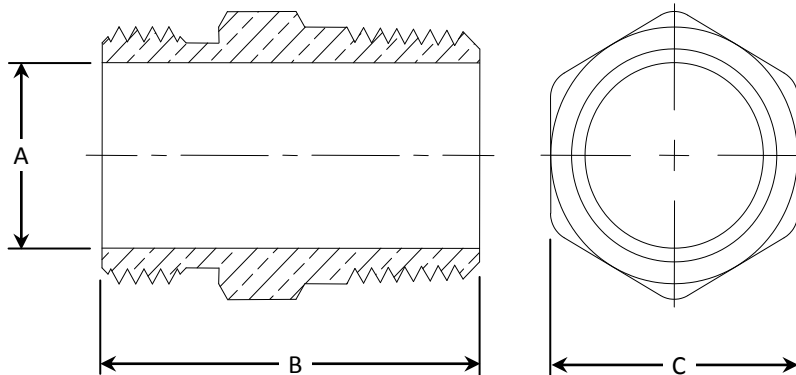
MATERIAL SPECIFICATIONS	
Fitting	C36000 brass

PART DIMENSIONS (Inches)			
Model	DIA. A	DIM. B	HEX. C
WRU-12-12	.77	1.62	1-1/16



Part Listing:

- WRU-12-12 3/4 -14 Straight Pipe Thread x 3/4" M.I.P. Union.



Listings & Certifications:

- For use with IAPMO & CSA listed ASME A112.18.6 / CSA B125.6 flexible connectors

This specification and all information contained herein is the confidential and exclusive property of BrassCraft Manufacturing, and shall not be disclosed to others without the written consent of BrassCraft. This specification must be returned to BrassCraft if requested.

