

## For Residential and Commercial Applications

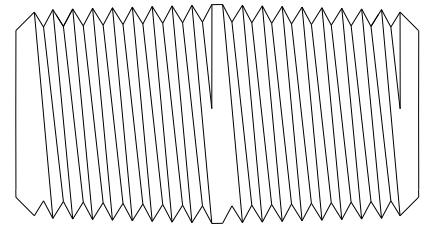
Job Name		Engineer / Architect	
Job Location		Wholesaler	
Submittal Date		Contractor	

### 112 Series I.P.S. Close Nipples – Male Iron Pipe x Male Iron Pipe

**Use:** For use with water, grease, fuels, LP and Natural Gas, refrigeration, instrumentation and hydraulic systems in low and medium pressure pipe line connections. Use in combination with brass, copper and iron pipe.

**Design Features:**

- **Designed & manufactured to SAE** (Society of Automotive Engineers) **thread standards**
- **Available in a broad range of sizes**

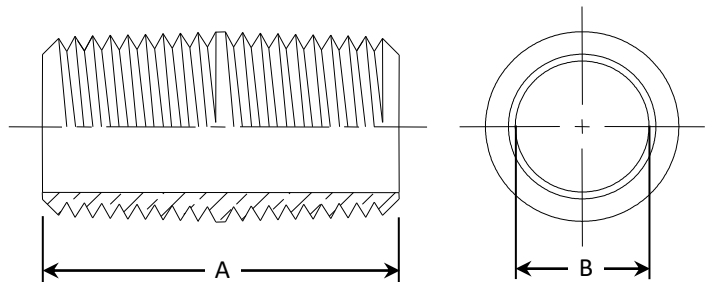


**Operating Specifications:**

- Temperature:** -65° to 250° F  
**Working Pressure:** up to 1200 PSI  
**Vibration:** fair resistance to vibration and pipe movement depending on conditions

FITTING MATERIAL SPECIFICATIONS	
<b>Body</b>	Brass

PART DIMENSIONS (Inches)		
Model	DIM. A	DIA. B
112-02	.75	.281
112-04	.88	.375
112-06	1.00	.500
112-08	1.13	.625
112-12	1.38	.825



**Part Listing:**

- 112-02-R      1/8" MIP x 1/8" MIP, rough brass
- 112-04-R      1/4" MIP x 1/4" MIP, rough brass
- 112-06-C      3/8" MIP x 3/8" MIP, chrome plated
- 112-06-R      3/8" MIP x 3/8" MIP, rough brass
- 112-08-C      1/2" MIP x 1/2" MIP, chrome plated
- 112-08-R      1/2" MIP x 1/2" MIP, rough brass
- 112-12-R      3/4" MIP x 3/4" MIP, rough brass
- 112-16-R      1" MIP x 1" MIP, rough brass

*This specification and all information contained herein is the confidential and exclusive property of Brasscraft Manufacturing Company and shall not be disclosed to others without the written consent of Brasscraft Mfg. Co. This specification must be returned to Brasscraft Mfg. Co. if requested.*