

# For Residential and Commercial Applications

Job Name		Engineer / Architect	
Job Location		Wholesaler	
Submittal Date		Contractor	

## 215 Series Close Pipe Nipple – Male Iron Pipe x Male Iron Pipe

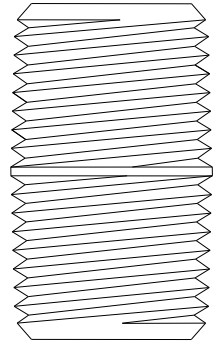
**Use:** For use with water, grease, fuels, LP and natural gas, refrigeration, instrumentation, and hydraulic systems in low and medium pressure pipe line connections. Use in combination with brass, copper, and iron pipe.

### Design Features:

- Available in a broad range of sizes

### Operating Specifications:

<b>Temperature:</b>	-65° to 250° F
<b>Working Pressure:</b>	1200 PSI maximum
<b>Vibration:</b>	Fair resistance to vibration and pipe movement depending on conditions



### FITTING MATERIAL SPECIFICATIONS

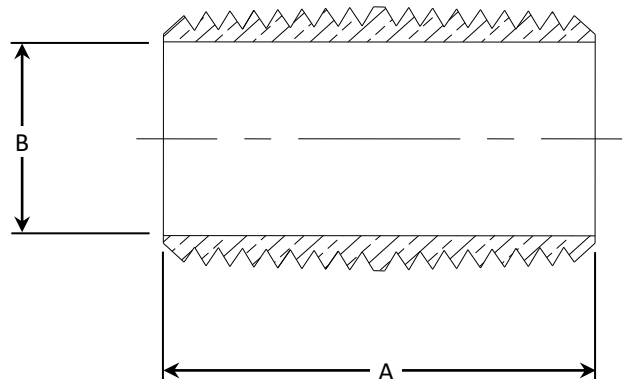
<b>Body</b>	Brass
-------------	-------

### PART DIMENSIONS (Inches)

Model	DIM. A	DIA. B
215-2	.75	.281
215-4	.88	.375
215-6	1.00	.500
215-8	1.12	.625
215-12	1.38	.825

### Part Listing:

<input type="checkbox"/>	215-2	1/8" MIP x 1/8" MIP
<input type="checkbox"/>	215-2 B	1/8" MIP x 1/8" MIP, bulk
<input type="checkbox"/>	215-4	1/4" MIP x 1/4" MIP
<input type="checkbox"/>	215-4 B	1/4" MIP x 1/4" MIP, bulk
<input type="checkbox"/>	215-6	3/8" MIP x 3/8" MIP
<input type="checkbox"/>	215-6 B	3/8" MIP x 3/8" MIP, bulk
<input type="checkbox"/>	215-8	1/2" MIP x 1/2" MIP
<input type="checkbox"/>	215-8 B	1/2" MIP x 1/2" MIP, bulk
<input type="checkbox"/>	215-12	3/4" MIP x 3/4" MIP, made in the USA
<input type="checkbox"/>	215-12 B	3/4" MIP x 3/4" MIP, bulk, made in the USA



Product made at the BrassCraft Canada facility unless otherwise noted.

This specification and all information contained herein is the confidential and exclusive property of Brasscraft Manufacturing Company and shall not be disclosed to others without the written consent of Brasscraft Mfg. Co. This specification must be returned to Brasscraft Mfg. Co. if requested.

300.221 215 Series Close Pipe Nipple - MIP x MIP REV 9.19

**BrassCraft**

©2019 Brasscraft Manufacturing Company