

For Residential and Commercial Applications

| | | | |
|----------------|--|----------------------|--|
| Job Name | | Engineer / Architect | |
| Job Location | | Wholesaler | |
| Submittal Date | | Contractor | |

73 Series Hose Barb Splicer

Use: For use with plastic or rubber tubing. Installation requires a hose clamp.

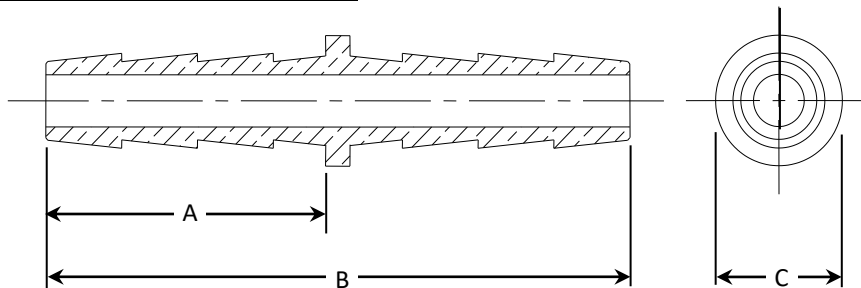
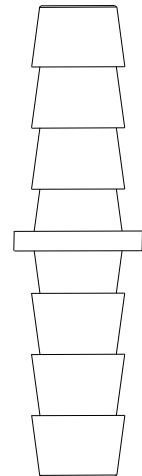
Operating Specifications:

Temperature: -40° - 160° F

Working Pressure: 150 PSI

| FITTING MATERIAL SPECIFICATIONS | |
|---------------------------------|-------|
| Body | Brass |

| PART DIMENSIONS (Inches) | | | |
|--------------------------|--------|--------|--------|
| Model | DIM. A | DIM. B | DIA. C |
| 73-3 | .69 | 1.44 | .31 |
| 73-4 | .75 | 1.56 | .38 |
| 73-5 | .97 | 2.00 | .353 |
| 73-6 | .97 | 2.00 | .415 |
| 73-8 | .97 | 2.00 | .530 |
| 73-10 | .97 | 2.00 | .75 |



Part Listing:

- 73-3 B 1/8" hose barb, both ends, bulk
- 73-4 1/4" hose barb, both ends
- 73-4 B 1/4" hose barb, both ends, bulk
- 73-5 5/16" hose barb, both ends
- 73-5 B 5/16" hose barb, both ends, bulk
- 73-6 3/8" hose barb, both ends
- 73-6 B 3/8" hose barb, both ends, bulk
- 73-8 1/2" hose barb, both ends
- 73-8 B 1/2" hose barb, both ends, bulk
- 73-10 B 5/8" hose barb, both ends, bulk

This specification and all information contained herein is the confidential and exclusive property of Brasscraft Manufacturing Company and shall not be disclosed to others without the written consent of Brasscraft Mfg. Co. This specification must be returned to Brasscraft Mfg. Co. if requested.

