

Job Name:

Engineer/Architect:

Job Location:

Wholesaler:

Submittal Date:

Contractor:

127 Series Ball Joint x Male Iron Pipe Adaptor

Use: Use with 128 Series Hose Barb x Female Iron Pipe Adaptor.

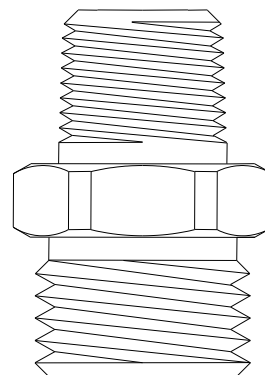
Design Features:

- Manufactured with dryseal pipe threads
- Available in a broad range of sizes

Operating Specifications:

Temperature: -40° to 160° F

Working Pressure: 150 PSI maximum



FITTING MATERIAL SPECIFICATIONS

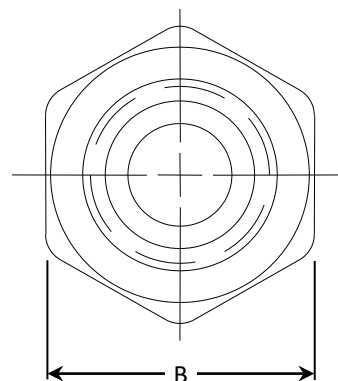
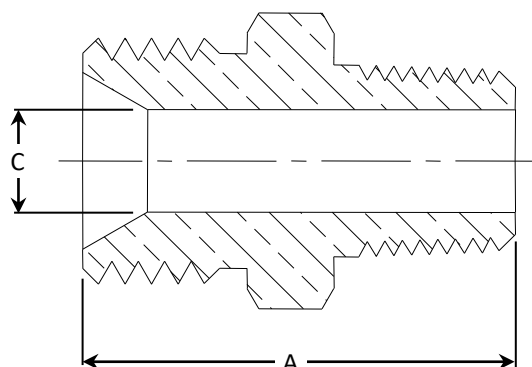
Body	Brass
-------------	-------

PART DIMENSIONS (Inches)

Model	DIM. A	HEX. B	DIA. C
127-4-2	.91	9/16	.218
127-4-4	1.02	9/16	.281
127-6-4	1.02	11/16	.312
127-6-6	1.31	11/16	.375
127-8-8	1.39	7/8	.531

Part Listing:

- ☐ 127-4-2 1/4" NPSM x 1/8" MIP
- ☐ 127-4-2 B 1/4" NPSM x 1/8" MIP, bulk
- ☐ 127-4-4 1/4" NPSM x 1/4" MIP
- ☐ 127-4-4 B 1/4" NPSM x 1/4" MIP, bulk
- ☐ 127-6-4 3/8" NPSM x 1/4" MIP, bulk
- ☐ 127-6-6 3/8" NPSM x 3/8" MIP, bulk
- ☐ 127-8-8 1/2" NPSM x 1/2" MIP
- ☐ 127-8-8 B 1/2" NPSM x 1/2" MIP, bulk



This specification and all information contained herein is the confidential and exclusive property of Brasscraft Manufacturing Company and shall not be disclosed to others without the written consent of Brasscraft Mfg. Co. This specification must be returned to Brasscraft Mfg. Co. if requested.

BrassCraft®