

# For Residential and Commercial Applications

Job Name		Engineer / Architect	
Job Location		Wholesaler	
Submittal Date		Contractor	

## 146 Series Hose Barb to Swivel Female Flare Adaptor

**Use:** For use plastic or rubber tubing. Installation requires a hose clamp.

### Operating Specifications:

**Temperature:** -40° to 160° F

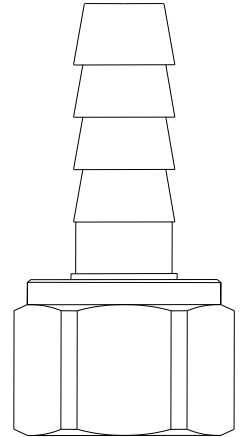
**Working Pressure:** 150 PSI maximum

### FITTING MATERIAL SPECIFICATIONS

<b>Body</b>	Brass
<b>Nut</b>	Brass

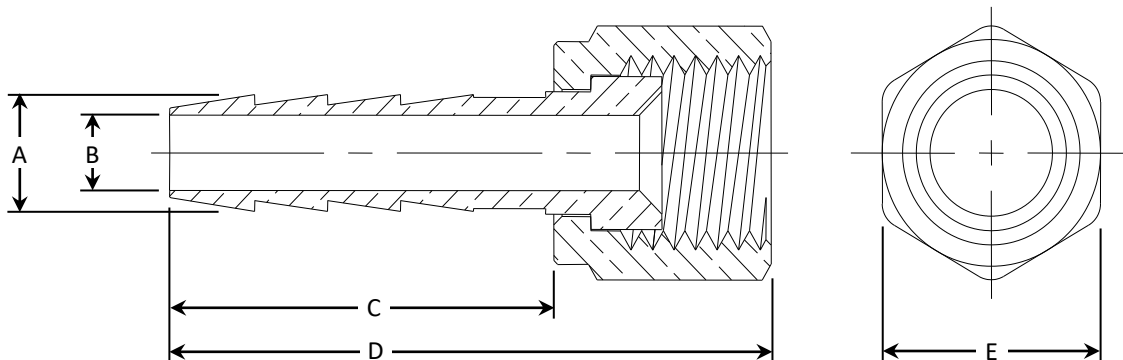
### PART DIMENSIONS (Inches)

Model	Straight Thread	DIA. A	DIA. B	DIM. C	DIM. D	HEX. E
146-4-4	7/16-20	.290	.187	.97	1.55	9/16
146-4-6	5/8-18	.290	.187	.97	1.68	3/4
146-6-6	5/8-18	.415	.281	.97	1.68	3/4
146-6-8	3/4-16	.415	.281	.97	1.72	15/16
146-8-8	3/4-16	.530	.375	.97	1.72	15/16



### Part Listing:

- ☐ 146-4-4 1/4" ID hose barb x 1/4" female flare
- ☐ 146-4-4 B 1/4" ID hose barb x 1/4" female flare, bulk
- ☐ 146-4-6 1/4" ID hose barb x 3/8" female flare
- ☐ 146-6-6 3/8" ID hose barb x 3/8" female flare
- ☐ 146-6-8 3/8" ID hose barb x 1/2" female flare
- ☐ 146-8-8 1/2" ID hose barb x 1/2" female flare
- ☐ 146-8-8-1 B 1/2" ID hose barb x 1/2" female flare, less flare nut, bulk



This specification and all information contained herein is the confidential and exclusive property of Brasscraft Manufacturing Company and shall not be disclosed to others without the written consent of Brasscraft Mfg. Co. This specification must be returned to Brasscraft Mfg. Co. if requested.

300.203 146 Series Hose Barb to Swivel Female Flare Adaptor REV 9.19

**BrassCraft**®

©2019 Brasscraft Manufacturing Company