

For Residential and Commercial Applications

Job Name		Engineer / Architect	
Job Location		Wholesaler	
Submittal Date		Contractor	

128 Series Hose Barb to Swivel Female Ball End

Use: For use plastic or rubber tubing. Installation requires a hose clamp.

Operating Specifications:

Temperature: -40° to 160° F

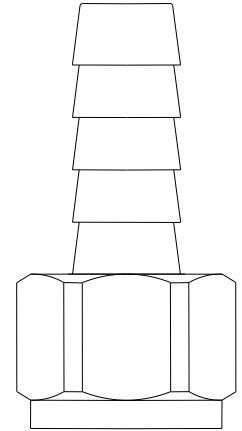
Working Pressure: 150 PSI maximum

FITTING MATERIAL SPECIFICATIONS

Body	Brass
Nut	Brass

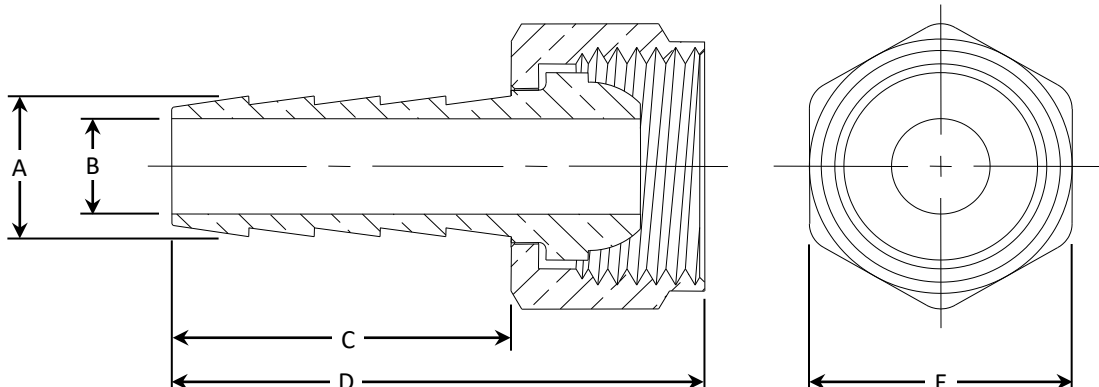
PART DIMENSIONS (Inches)

Model	DIA. A	DIA. B	DIM. C	DIM. D	HEX. E
128-4-4	.290	.187	.97	1.52	5/8
128-6-4	.415	.250	.97	1.54	5/8
128-6-6	.415	.281	.97	1.52	3/4
128-8-6	.530	.375	.97	1.52	3/4
128-8-8	.530	.406	.97	1.52	15/16
128-10-12	.693	.500	1.74	2.49	1-1/8



Part Listing:

- ☐ 128-4-4 1/4" ID hose barb x female ball end (1/4" NPSM thread)
- ☐ 128-4-4 B 1/4" ID hose barb x female ball end (1/4" NPSM thread), bulk
- ☐ 128-6-4 3/8" ID hose barb x female ball end (1/4" NPSM thread)
- ☐ 128-6-6 3/8" ID hose barb x female ball end (3/8" NPSM thread)
- ☐ 128-6-6 B 3/8" ID hose barb x female ball end (3/8" NPSM thread), bulk
- ☐ 128-8-6 1/2" ID hose barb x female ball end (3/8" NPSM thread)
- ☐ 128-8-8 1/2" ID hose barb x female ball end (1/2" NPSM thread)
- ☐ 128-10-12 B 5/8" ID hose barb x female ball end (3/4" NPSM thread), bulk



This specification and all information contained herein is the confidential and exclusive property of Brasscraft Manufacturing Company and shall not be disclosed to others without the written consent of Brasscraft Mfg. Co. This specification must be returned to Brasscraft Mfg. Co. if requested.