

# For Residential and Commercial Applications

Job Name		Engineer / Architect	
Job Location		Wholesaler	
Submittal Date		Contractor	

## Y-9 Garden Hose Y Fitting

**Use:** For use with residential and commercial grade garden hose. All female hose thread connections require a rubber washer (Items SF0741 and SFB0741 sold separately) inserted prior to installation.

### Operating Specifications:

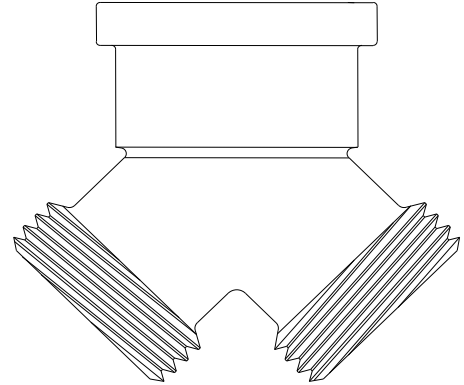
**Temperature:** -35° to 100° F  
**Working Pressure:** 75 PSI maximum,  
intermittent to 150 PSI

### FITTING MATERIAL SPECIFICATIONS

<b>Body</b>	Brass
-------------	-------

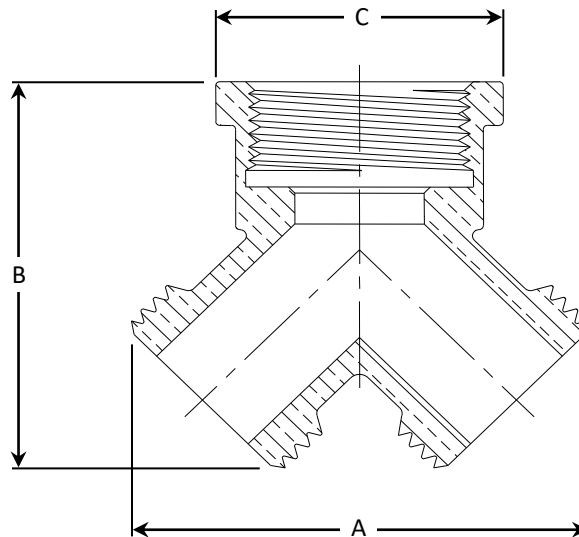
### PART DIMENSIONS (Inches)

Model	Hose Thread	DIM. A	DIM. B	DIA. C
Y-9	3/4-11-1/2	2.19	1.94	1.38



### Part Listing:

☐ Y-9 3/4" female hose thread x 3/4" male hose thread x 3/4" male hose thread



This specification and all information contained herein is the confidential and exclusive property of BrassCraft Manufacturing Company and shall not be disclosed to others without the written consent of BrassCraft. This specification must be returned to BrassCraft if requested.

300.134 Y-9 Garden Hose Y Fitting REV 4.22

**BrassCraft**

©2022 BrassCraft Manufacturing Company