

**For Residential and Commercial Applications**

Job Name		Engineer / Architect	
Job Location		Wholesaler	
Submittal Date		Contractor	

## 462 Series Female Flare x Compression Adaptor

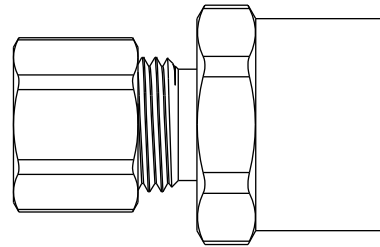
**Use:** Used to convert the flare outlet of a water stop to a compression connection. May also be used with instrumentation, hydraulic, and pneumatic systems. Designed for use with aluminum, copper, and plastic tubing. Not intended for use with steel tubing.

**NOTE:** Female flare connection does not require a washer to seal. However, washers are available to reduce seal torque.

**Operating Specifications:**

- Temperature:** -65° to 250°F at max operating pressures
- Working Pressure:** See chart below
- Vibration:** Fair vibration resistance

WORKING PRESSURE		
PSI	Tube OD (Inches)	Tube Wall (Inches)
400	1/8	0.030
400	3/16	0.030
300	1/4	0.030
300	5/16	0.032
200	3/8	0.032
200	1/2	0.032
150	5/8	0.035
100	3/4	0.035
75	7/8	0.035



**Standard**

FITTING MATERIAL SPECIFICATIONS	
<b>Body</b>	Brass
<b>Compression Sleeve</b>	Brass
<b>Compression Nut</b>	Brass

**Low-lead**

FITTING MATERIAL SPECIFICATIONS	
<b>Body</b>	Low-lead brass
<b>Compression Sleeve</b>	Brass
<b>Compression Nut</b>	Brass

**Standard Part Listing:**

- 462-6-4      3/8" female flare, fine thread x 1/4" OD tube
- 462-6-6      3/8" female flare, fine thread x 3/8" OD tube
- 462-8-6      1/2" female flare, fine thread x 3/8" OD tube

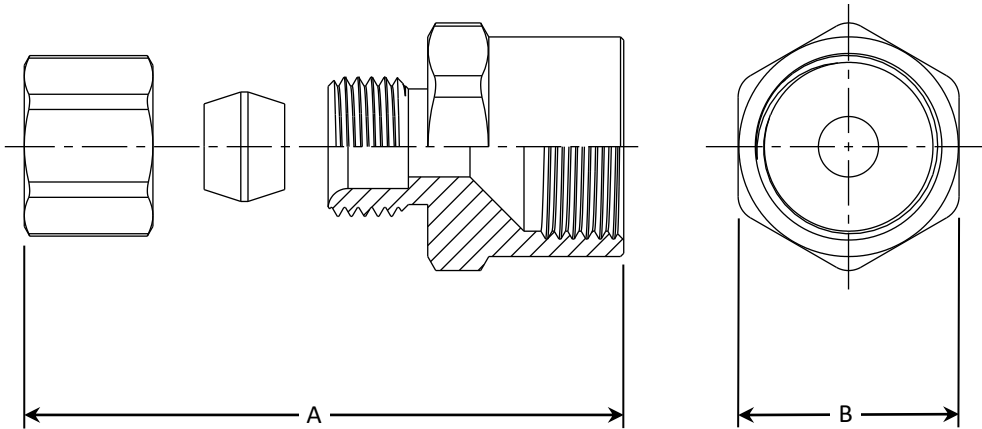
This specification and all information contained herein is the confidential and exclusive property of Brasscraft Manufacturing Company and shall not be disclosed to others without the written consent of Brasscraft Mfg. Co. This specification must be returned to Brasscraft Mfg. Co. if requested.

# 462 Series Female Flare x Compression Adaptor

**Low-lead Part Listing:**

- 462-6-4X      3/8" female flare, fine thread x 1/4" OD tube
- 462-6-6X      3/8" female flare, fine thread x 3/8" OD tube
- 462-8-6X      1/2" female flare, fine thread x 3/8" OD tube

PART DIMENSIONS (Inches)		
Model	DIM. A	HEX. B
462-6-4	1.21	11/16
462-6-6	1.08	5/8
462-8-6	1.22	13/16



*This specification and all information contained herein is the confidential and exclusive property of Brasscraft Manufacturing Company and shall not be disclosed to others without the written consent of Brasscraft Mfg. Co. This specification must be returned to Brasscraft Mfg. Co. if requested.*