

For Residential and Commercial Applications

Job Name:

Engineer/Architect:

Job Location:

Wholesaler:

Submittal Date:

Contractor:

63WX Series Compression x Compression Adaptor

Use: For use with instrumentation, hydraulic, and pneumatic systems. Designed for use with aluminum, copper, and plastic tubing. Not intended for use with steel tubing.

* Plastic tubing requires a plastic insert and sleeve (see 60PT & 63PT submittal forms for details).

Design Features:

- **Little to no tube preparation.** Compression fittings do not require flaring, soldering or other types of tube preparation

**Operating Specifications:****Temperature:**

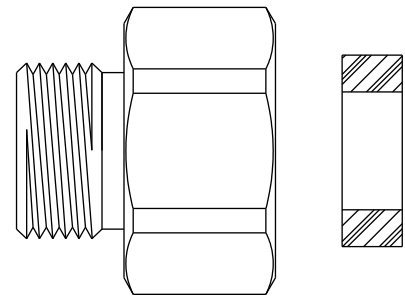
-65° - 250° F at maximum operating pressures

Working Pressure:

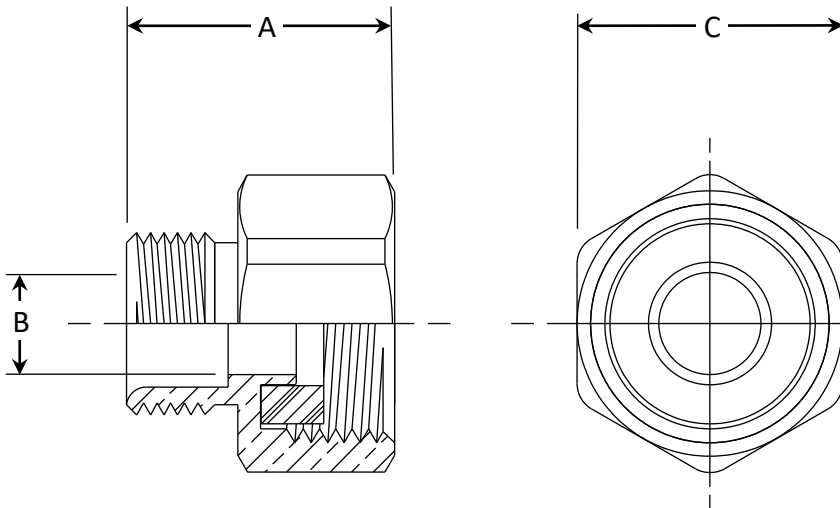
See chart below

Vibration:

Fair vibration resistance

**FITTING MATERIAL SPECIFICATIONS**

Body	Brass
Washer	Rubber

**WORKING PRESSURE**

PSI	Tube OD	Tube Wall (Inches)
400	1/8	0.030
400	3/16	0.030
300	1/4	0.030
300	5/16	0.032
200	3/8	0.032
200	1/2	0.032
150	5/8	0.035
100	3/4	0.035
75	7/8	0.035

PART DIMENSIONS (Inches)

Model	DIM. A	DIA. B	HEX. C
63-6-8WX	.82	.312	.812

Part Listing:

63-6-8WX CD

3/8" OD tube x 1/2" OD tube with rubber washer, carded

This specification and all information contained herein is the confidential and exclusive property of Brasscraft Manufacturing Company and shall not be disclosed to others without the written consent of Brasscraft Mfg. Co. This specification must be returned to Brasscraft Mfg. Co. if requested.

300.115 63WX Series Brass Fitting Adaptor - Comp x Comp REV 9.19

BrassCraft®

©2019 Brasscraft Manufacturing Company